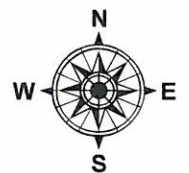
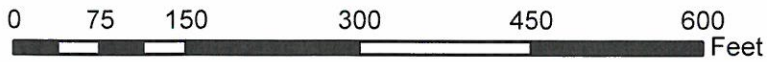
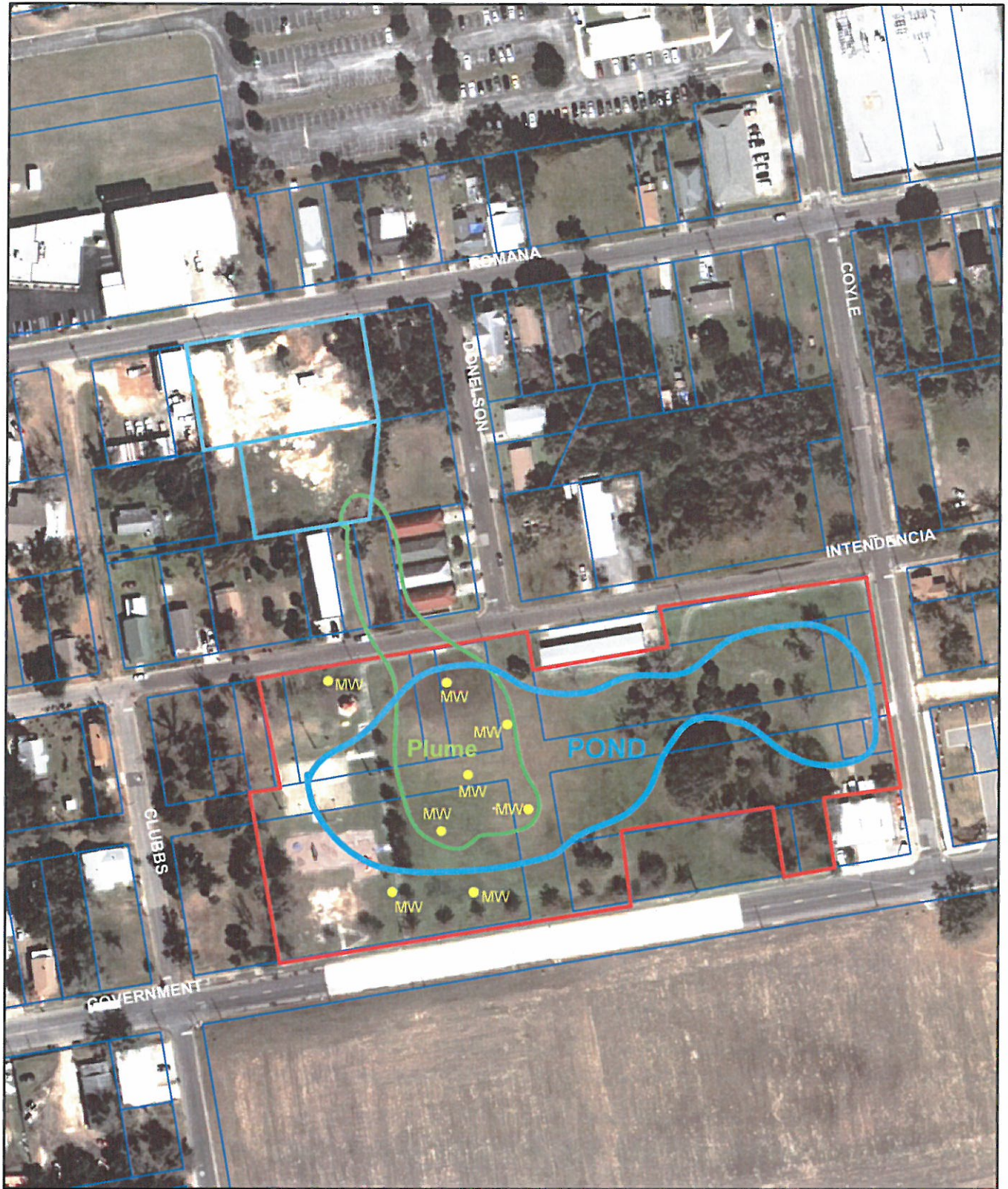
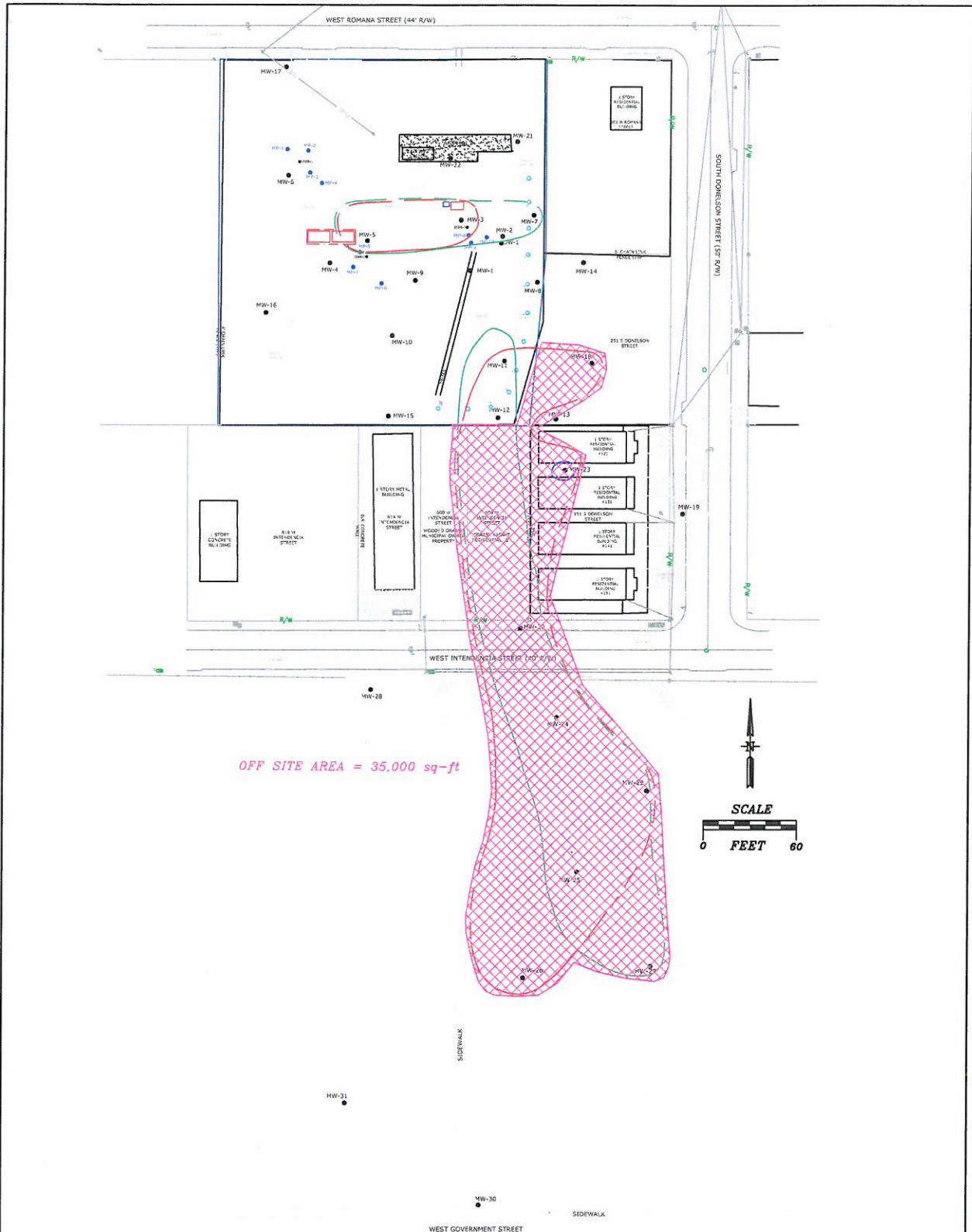
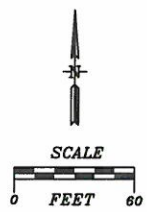


Government St. Pond & Plume





OFF SITE AREA = 35,000 sq-ft



LEGEND

- WATER METER
- OVERHEAD UTILITIES
- FORMER TANK LOCATIONS
- FORMER SEPTIC TANK LOCATIONS
- MW-12 MONITORING WELL LOCATION & NUMBER
- ISBR-2 PILOT TEST IN SITU BIOREACTOR WELL LOCATION & NUMBER
- MP-8 MONITORING POINT LOCATION
- Biosparging Well
- alpha-HCH 0.006 ug/L contour December 2013 Sampling Event (dashed where inferred)
- beta-HCH 0.02 ug/L contour December 2013 Sampling Event (dashed where inferred)
- gamma-HCH 0.2 ug/L contour, December 2013 Sampling Event (dashed where inferred)
- Off site area defined for mass calculations.

SAMPLE DATES: DECEMBER 4-6, 2013

BY	DATE
DESIGN DLC	3/28/2014
CHECKED	
APPROVED	
APPROVED	
APPROVED	

Cameron-Cole
 200 E. GOVERNMENT STREET, SUITE 100
 PENSACOLA, FLORIDA 32502
 PHONE: 850-434-1011
 FAX: 850-434-2169
<http://www.cameron-cole.com>

FIGURE 1
MASS CALCULATION AREAS
FORMER ESCAMBIA COUNTY MOSQUITO CONTROL
PENSACOLA, FLORIDA

SCALE: 1" = 60'	DWG. NO.: 40214 HCH MASS CALCS.dwg	PROJECT NO. 40214
-----------------	------------------------------------	-------------------